



CALL FOR PAPERS
FLORIDA LAKE MANAGEMENT SOCIETY
21st ANNUAL CONFERENCE
June 14-17, 2010
Plantation Inn, Crystal River, FL
www.flms.net

Conference Theme: *Exploring the Springs Coast*

The Florida Lake Management Society will host the 21st Annual FLMS Conference and Meeting at the beautiful Plantation Inn in Crystal River, Florida (<http://www.plantationgolfandspa.com/>) from June 14-17, 2010. The 2010 Conference will include a day of workshops on Monday, June 14, covering various lake and watershed management topics. Conference sessions begin on Tuesday, June 15 and run through the morning of Thursday, June 17. We have an exciting and informative agenda with technical sessions held on a wide variety of topics related to water resources and lake management issues. The Conference will offer CEUs for the NALMS CLM/CLP certifications. An attendance of 200+ participants and 25+ exhibitors is expected.

Examples of platform and poster sessions currently being considered are the following:

- * Springs and spring runs
- * Use of Reclaimed Water
- * Climate change and sea level rise
- * Cyanobacteria and Toxic Algae
- * Natural Systems Restoration
- * Regulatory Programs/TMDLs/NPDES
- * Nutrient Management
- * Aquatic Plant Management
- * Watershed Management
- * Aquatic dependent species
- * Karst systems and sinkholes
- * Wetlands
- * Minimum Levels and Flows
- * Surface Water Withdrawals/ASR
- * Innovative Education Initiatives

Suggested Special Sessions for the 2010 Conference:
Numeric Nutrient Criteria development in Florida's Fresh and Estuarine Waters
Tools for Assessing the Link between Nutrients and Lake and Stream Ecology

Special sessions on other topics can be accommodated – please contact the Program Chair

ABSTRACT DEADLINE IS MARCH 5th, 2010

Example abstracts with formatting requirements are provided on pages 4-5. Please prepare your abstract in Microsoft Word and send by e-mail to klevy@pinellascounty.org. Please note: abstracts not meeting the formatting requirements will be returned to the author for correction.

Authors are encouraged to submit abstracts on all topics for the poster session. Posters should be no larger than 4 feet wide and 3 feet high.

Authors in oral sessions are required to use a PowerPoint format for their presentation. **Overhead projectors and 35 mm projectors will NOT be available at the Conference.** Each session room will be equipped with a computer, LCD projector, and operator. Digital copies of presentations must be submitted prior to the Conference to Dean Dobberfuhr at ddobberfuhr@sjrwmd.com. Connection of individual computers to the session equipment will not be allowed.

Authors of conference papers will be asked to submit a 2-page extended Abstract for inclusion into the Conference Proceedings that will be distributed at the Conference. Details for preparing the extended Abstract will be provided with the Acceptance Notification. Conference fees are NOT waived for contributing authors, and all presenters are required to register for the Conference.

Additional information related to the conference can be found on the FLMS web site (www.FLMS.net) or from the appropriate chairperson below:

Conference Information:

Jim Griffin – Conference Co-Chair
E-Mail: griffin@arch.usf.edu
Phone: (813) 974-1068

John Walkinshaw – Conference Co-Chair
E-Mail: jwalkinshaw@gpinet.com
Phone: (813) 632-7676

Kelli Levy – FLMS President
E-Mail: klevy@pinellascounty.org
Phone: (727) 464-3317

Exhibitor and Sponsor Information:

Jennifer Sagan – Sponsorship Chair
E-Mail: jsagan@bcieng.com
Phone: (386) 937-3922

Student Travel Grants:

Julie Terrell – Grant Chair
E-Mail: terrellj@nwfsc.edu
Phone: (850) 729-6422

Abstract Submittal and Program:

Kelli Levy – Program Chair
E-Mail: klevy@pinellascounty.org
Phone: (727) 464-3317

Workshop Information:

Shannon Carter-Wetzel – Workshop Co-Chair
E-Mail: swetzel@seminolecountyfl.gov
Phone: (407) 665-2455

Jim Griffin – Workshop Co-Chair
E-Mail: griffin@arch.usf.edu
Phone: (813) 974-1068

Weekend in My Watershed Information:

Jim Griffin – Weekend Event Co-Chair
E-Mail: griffin@arch.usf.edu
Phone: (813) 974-1068

John Walkinshaw – Weekend Event Co-Chair
E-Mail: jwalkinshaw@gpinet.com
Phone: (813) 632-7676

Student Awards and Travel Grants to Florida Residents

The Florida Lake Management Society will award cash prizes of \$300, \$200, and \$100 to student presenters for oral or poster presentations that most contribute to the science of lake management. Student presenters must be currently enrolled as a graduate or underclass Senior student at an institution of higher learning in Florida and have completed the topic research under the direction of a faculty advisor. If you wish to compete for these awards, please tell us with your abstract submittal. FLMS also offers a limited number of travel grants to graduate students involved in water resource management, as well as middle or high-school environmental science teachers in Florida. Travel grants can be used to pay for room and registration fees. For more information, see the FLMS web site, www.flms.net.

Call for Technical Training Workshops

Up to eight Pre-Conference Training Workshops are planned for Monday, June 14, 2010, on a wide range of lake management, watershed, and restoration issues. Workshops may be one half-day or a full day in length. Persons interested in presenting a workshop should contact the Workshop Chair. FLMS does not compensate workshop presenters. Workshop topics under consideration include:

1. Surface Water Monitoring Training
2. Analyzing Environmental Data
3. Aquatic Plant Identification and Monitoring
4. TMDL and BMAP Planning Tools
5. Lake and Watershed Planning
6. **New!** Lake Vegetation Index training
7. NPDES Regulatory Considerations
8. Identification and Management of Nuisance Filamentous Algae

[NEW! Call for Vendor Workshops](#)

FLMS acknowledges the importance industry plays in technological advances pertaining to lake management and wants to offer the opportunity at this conference for hands on interaction. For vendors interested in offering a workshop to demonstrate equipment and services; workshops will be held the afternoon of Monday June 14. Workshops shall be organized, administered, and operated solely by the vendors and are not directly connected to the FLMS conference. FLMS will announce such offerings as part of the conference announcements and will refer interested participants to the vendor accordingly. Vendors interested in presenting a workshop should contact the Workshop Chair. FLMS does not compensate workshop presenters.

Hotel Reservations

FLMS is offering hotel reservations at exceptional prices before, during, and after the Conference. Government double room rate: \$70 (**Code: FLMSGV**), Standard double or king room rate: \$109 + tax (**Code: FLMS**); Patio king or patio double room rate: \$119 + tax (**Code: FLMSSP**). These rates are available from June 9-20, 2010. **Reservations must be made no later than May 13, 2010, to get these favorable rates.**

To reserve your rooms call (800) 632-6262 and identify yourself as a part of FLMS: Florida Lake Management Society. Please use the codes shown above to ensure your room selection and rate is correct.

Additionally, the Plantation Inn has offered the following complimentary or reduced fee services:

Complimentary:

- Parking
- Internet in sleeping rooms and meeting rooms
- Boat trailer parking and launching
- Daily newspaper
- Local phone calls
- Sand volleyball
- Business center
- Fitness center
- Croquet, shuffle board, and horseshoes
- Tennis

Reduced fees:

- 10% off pontoon rentals Monday –Friday
- Golf \$29/person + tax for 18 holes includes cart

EXAMPLE 1: MULTIPLE AUTHORS CENTER TITLE AND USE ALL CAPS, TIMES NEW ROMAN, FONT BLACK, SIZE 12, BOLD, SINGLE SPACE

Double space before author info

Presenting author's name underlined and italicized¹ and additional author(s)^{2, 3...}

¹Affiliation of presenting author, City, State

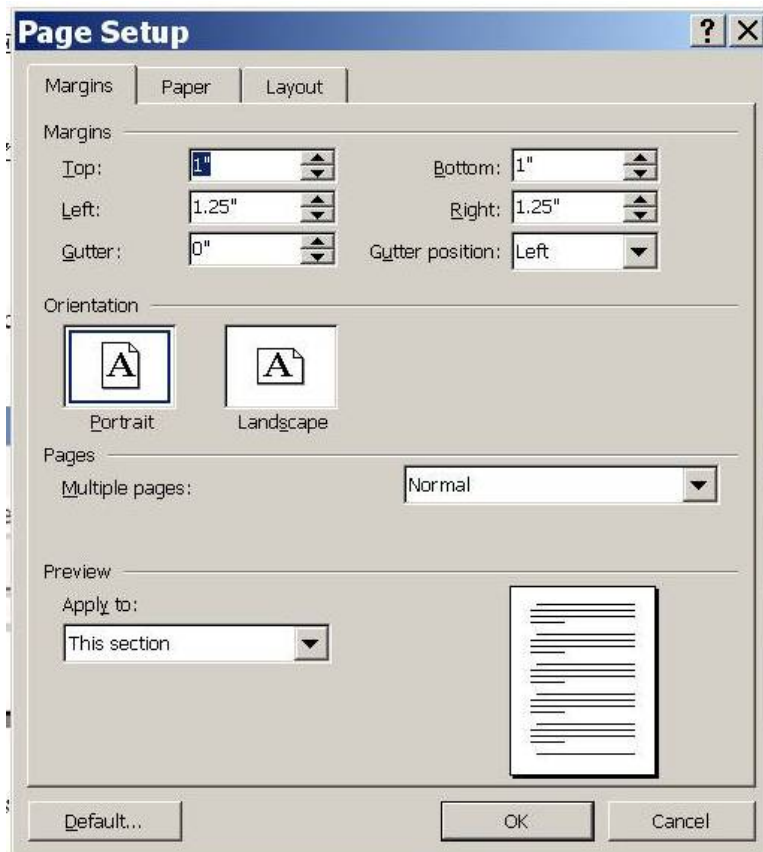
^{2, 3...}Affiliation of additional authors, City, State

Double space before starting abstract

Start abstract here using Times New Roman, single spaced, font size 12, black. Select justified alignment as shown below.



Page set up should be as shown below. Tab should indent to 0.5”



**EXAMPLE 2: SINGLE AUTHOR CENTER TITLE AND USE ALL CAPS,
TIMES NEW ROMAN, FONT BLACK, SIZE 12, BOLD, SINGLE SPACE**

Double space

Presenting author's name underlined and italicized

Affiliation of presenting author, City, State

Double space

Start abstract here using Times New Roman, single spaced, font size 12, black.
Select justified alignment and page set up as shown in example 1.